



Automatic threader :

www.matri.eu

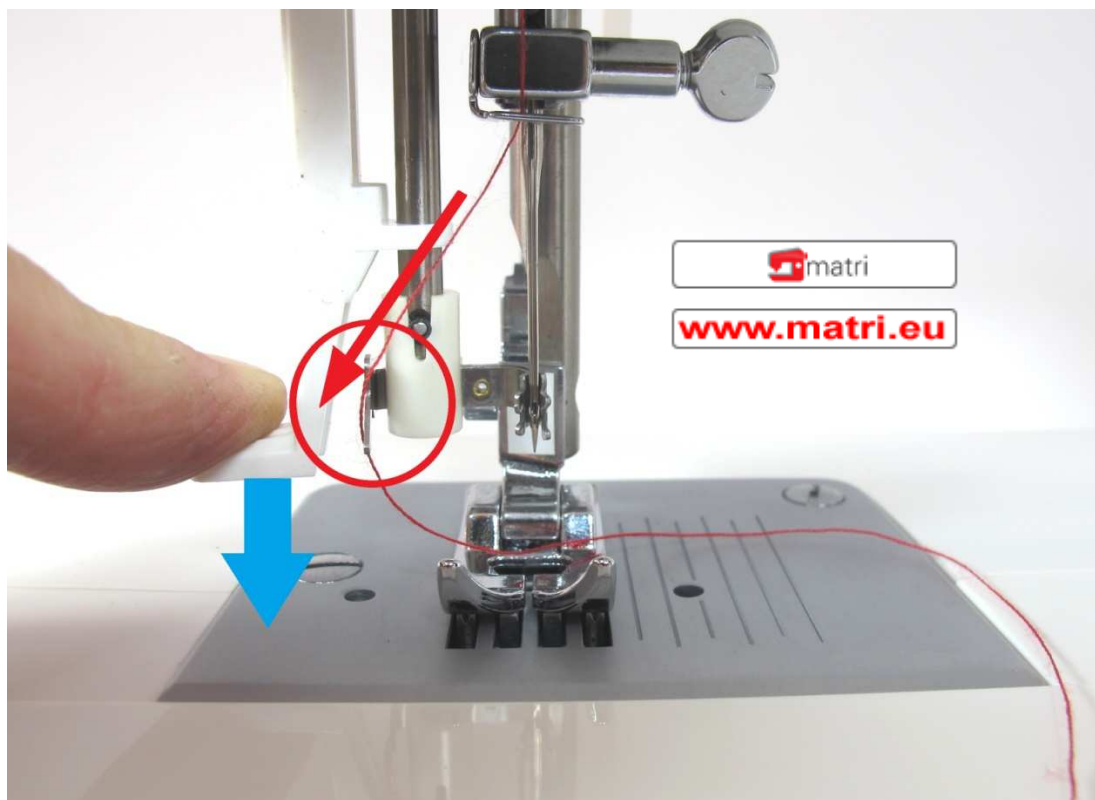
Thread as instructed in the manual, until the hook just above the needle.



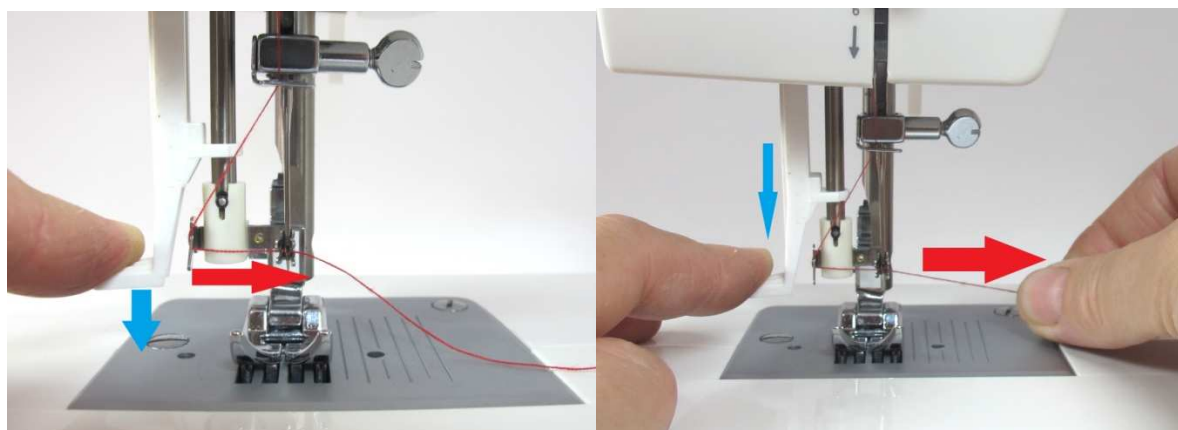
Push the threader with your left hand down. The threader will turn while its little « hooks on the right » will go around the needle.



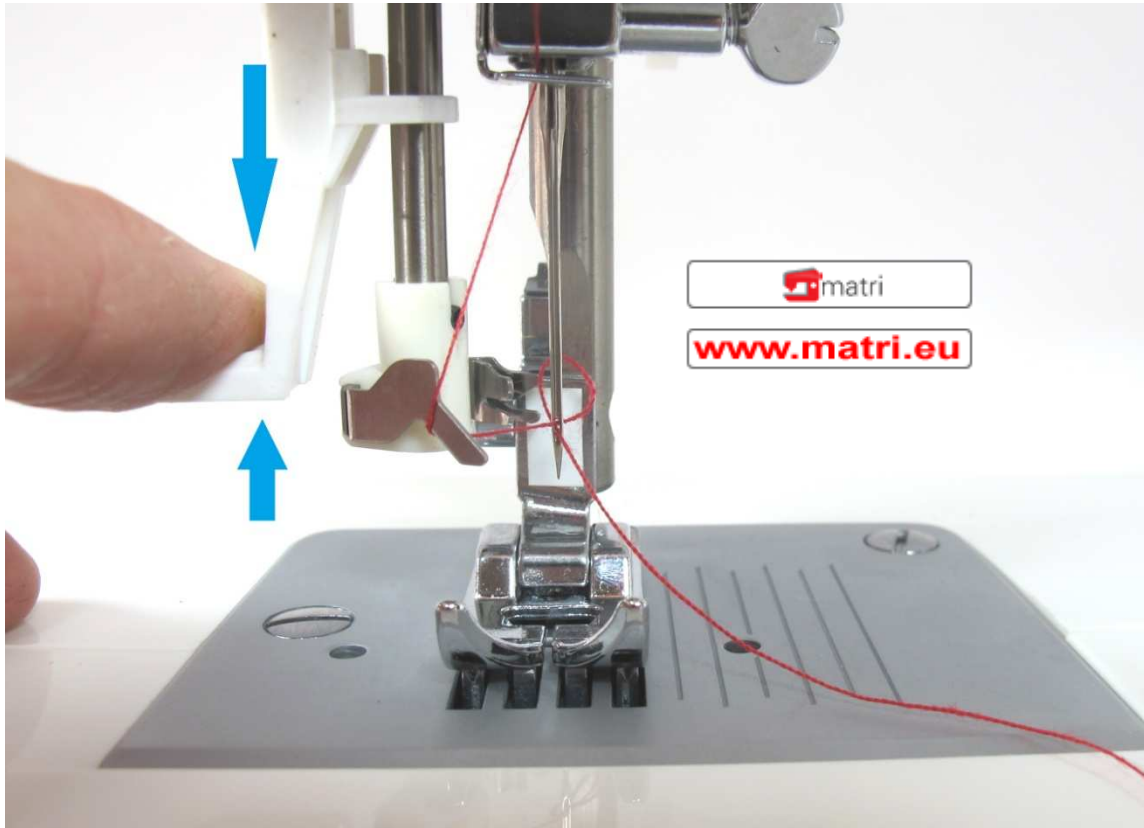
Take the thread in your right hand and put the thread around the « left hook ». Use your left hand to hold the needle threader down.



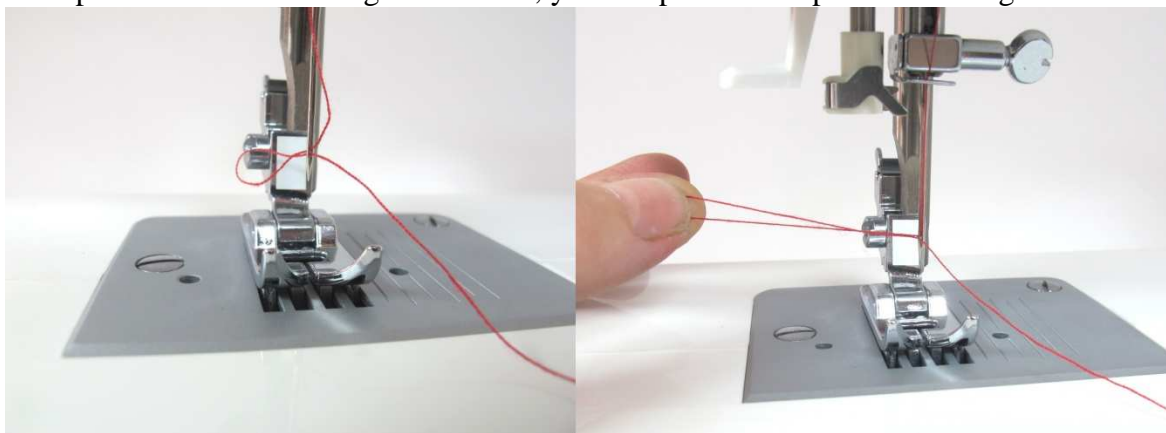
Pull the thread to the right between the « right hooks » left and right around the needle. Keep the needle threader down with your left hand.



Release the needle threader slowly while releasing the thread in your right hand.



A loop will be formed through the needle, you can pull this loop further through.



If it doesn't work straight away, please try again. If it doesn't work after a few tries, use a new needle. Most of the time this works..

Good luck
Team Matri.

